

Tuba in E \flat
(Bass Clef)

Commissioned by Roosevelt High School Symphonic Band, Hawaii (USA)

ルーズヴェルト高校シンフォニックバンド委嘱作品

FOUR SEASONS OF JAPAN

古都 — 四季の彩り

Satoshi YAGISAWA

八木澤 教司 作曲

Autumn - The Maple Road

Energico (♩ = ca.84)

7

12 **A**

18 **B**

25 **C**

29

* Feet hit floor

sfz *sfp* *sfz* *fffz*

mf *f*

sfz *sfz* *sfz*

sfz *sfz* *mp*

mf *sfz* *sfz* *sfz* *ff*

ff *mp* *f* *fffz* *fffzp*

Winter - Snow Mountains

Feroce (♩ = ca.144)

33 **D**

38

fffz *mp*

Tuba in E \flat (Bass Clef)

43 **E**

f *mp* *marc.*

47

mf *f*

51 **F** **G**

mp *f* *mp*

60

mf

65 **H**

f *ff*

70

f

74 **I**

ff

79

84 **J**

fff

89 **K** **Misterioso** (♩ = ca. 63) *Ritardando*

mf *mp*

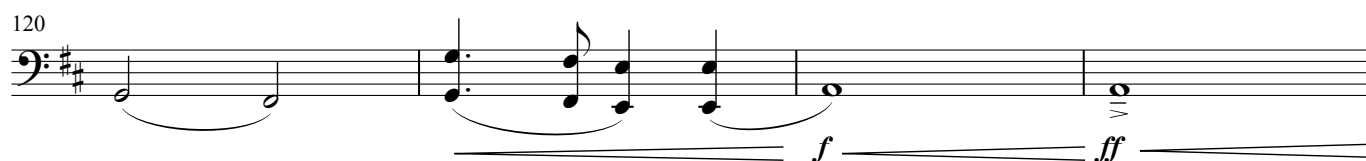
Spring - Cherry Blossom

Tuba in E \flat (Bass Clef)

99 **L** Amabile (♩ = ca.63) **M** Cantabile (♩ = ca.69)

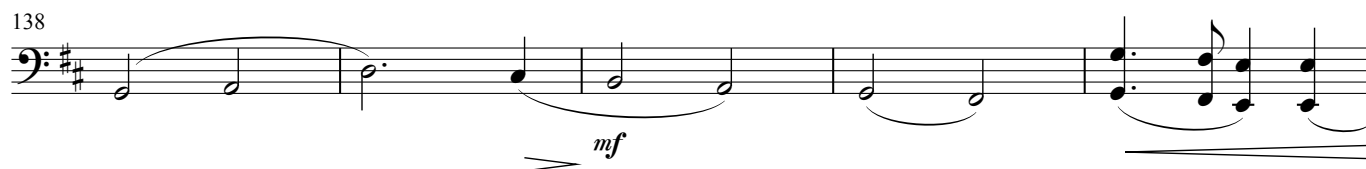
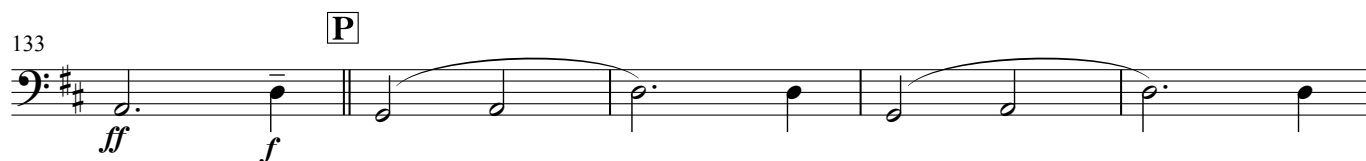
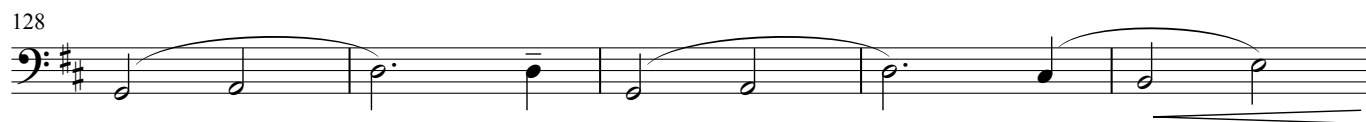


115 **N** Con moto (♩ = ca.72)



Summer - Fireworks

124 (Allargando) **O** Appassionato (♩ = ca.72)



143 Allargando **Q** Grandioso (♩ = ca.72)

