

Bass Tuba in B^b
(T. C.)

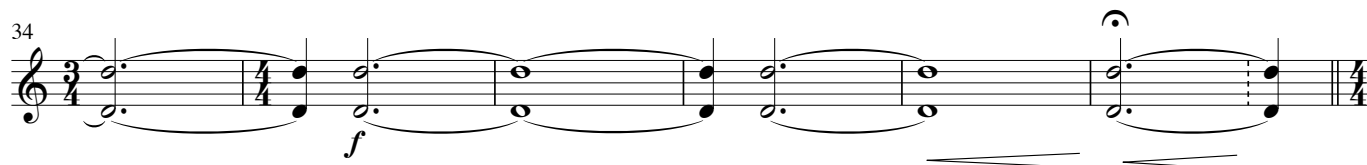
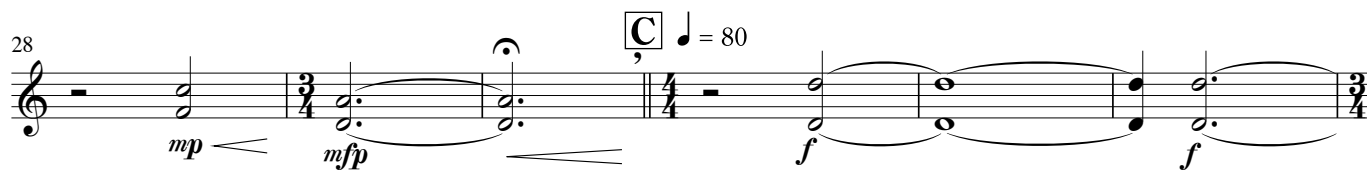
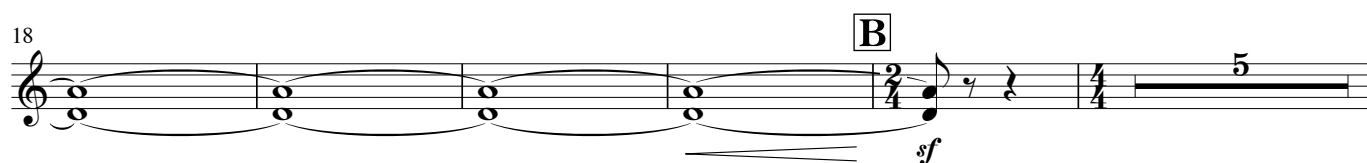
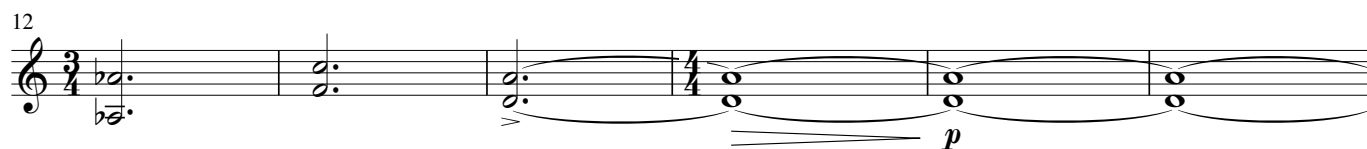
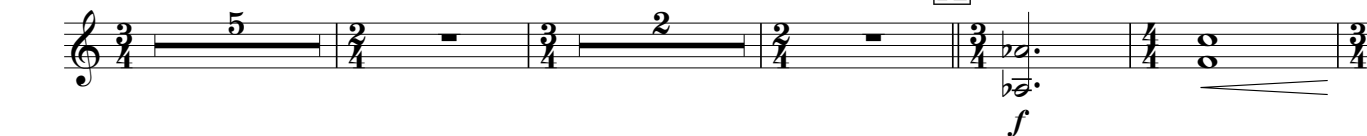
NOBUNAGA

A Shaft of Light in the Renaissance

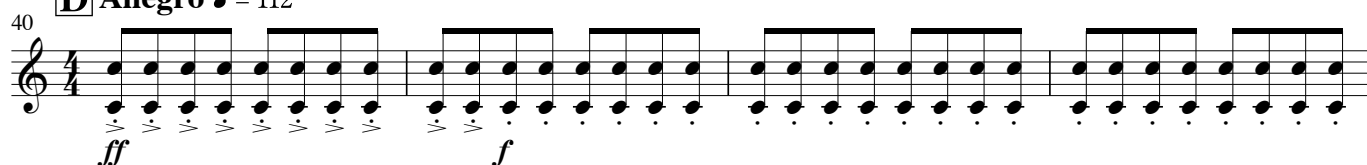
Eiji Suzuki op.66 (2006)

Tempo giusto ♩ = 76

A



D Allegro ♩ = 112



Bass Tuba in B^b (T. C.)

52 **E**

f

56 **F**

f

60 **G** **H**

p *mf* *f*

80

84 **I** **J**

p

98

105

K poco meno mosso ♩ = 96
(Josquin Desprez "Mille regretz.")

111 **L**

p

Bass Tuba in B^b (T. C.)

137

mp *mf*

143

M

f *mf*

149

f

155

f *mf* *mp*

161

Lamentoso ♩ = 76

N risoluto ♩ = 88

p *f*

178

O ♩ = 76

f *ff*

184

allarg.

ff