

Tuba in E^b
(B. C.)

Commissioned by Tokyo Ryusei Wind Orchestra

La mer ~ Réminiscence de Claude Debussy

ラ・メール〜クロード・ドビュッシーのレミニサンス



Kei Misawa (2024)

Andante molto espressivo ♩=63

poco rit. a tempo poco rit. a tempo

p sfz p sfz p

6 *poco rit. a tempo rit. A a tempo rit. a tempo*

sfz p sfz

12 *rit. rubato B a tempo rit. a tempo accel.*

p cresc. poco a poco mp cresc.

17 *> stringendo molto rit. C Molto meno mosso* ♩=66

mf molto cresc. f sfz f

22 *D rit. E a tempo*

sfz mf mp mf

30 *rit. a tempo F Allegro vivace* ♩=144

sfzp p mf

40 *ff*

46 *G*

p cresc. ff mf

57 *H I*

mf mp

64 *J*

f

Tuba in E^b (B. C.)

70



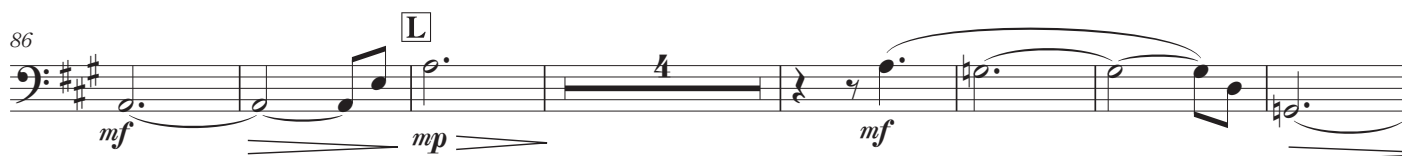
75



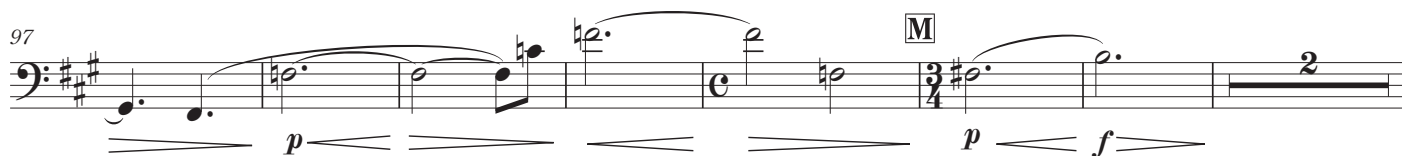
80



86



97



106



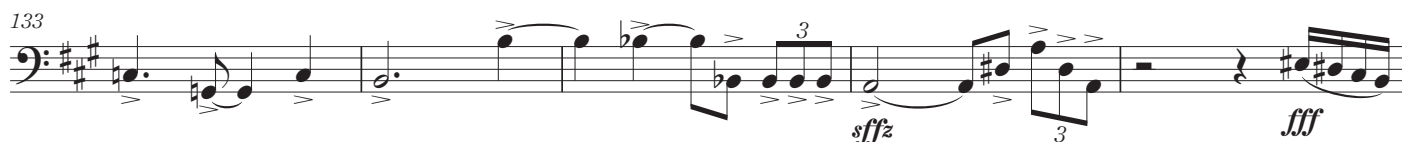
121



129



133



138



143



Tuba in E^b (B. C.)

Poco meno mosso $\text{♩}=116$

Giocoso $\text{♩}=144$ *a tempo* ($\text{♩}=116$) *rit.*

149 **Q** Tempo di valse $\text{♩}=144$

rit.

R

rit.



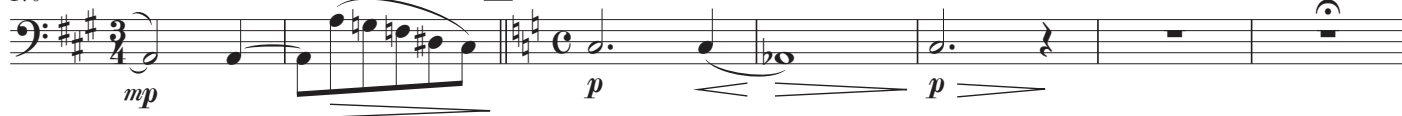
Poco meno mosso $\text{♩}=104$

molto rit.

S

Molto meno mosso e sostenuto $\text{♩}=60$

170



177 **T** Adagio molto espressivo $\text{♩}=60$

U



190

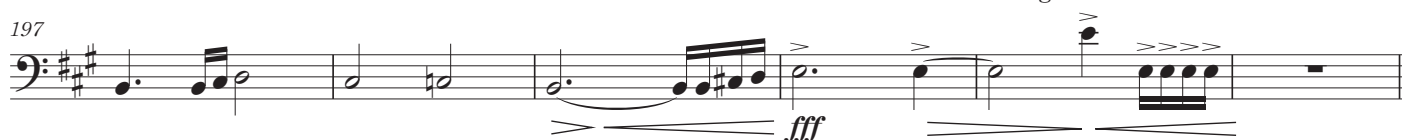
V

Poco con moto $\text{♩}=66$

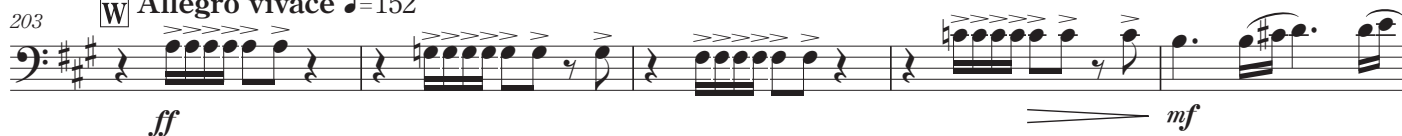


197

allarg molto e molto



203 **W** Allegro vivace $\text{♩}=152$



208

X

Moderato assai $\text{♩}=92$



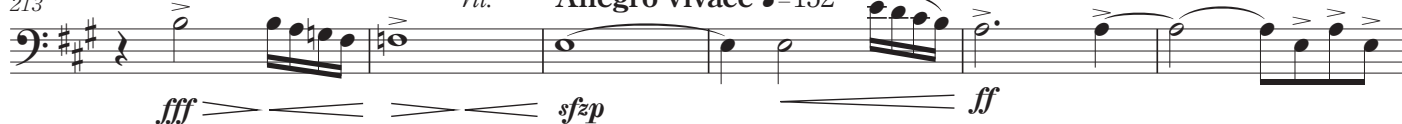
213

a tempo

rit.

Allegro vivace $\text{♩}=152$

Y



219



224

molto rit.

