

Tuba in E $\flat$   
(B. C.)

雷神

～ソロパーカッションと吹奏楽のための協奏曲

RAIJIN Concert for Solo Percussion and Wind Orchestra

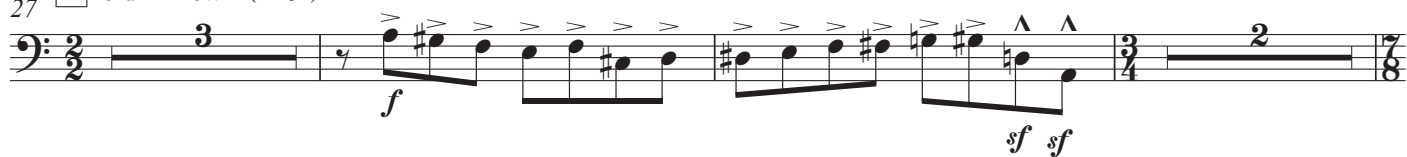
高昌帥  
Chang Su Koh

Lento (♩=46)

1



27 2 old ♩=new ♩ (♩=92)



34



42 3

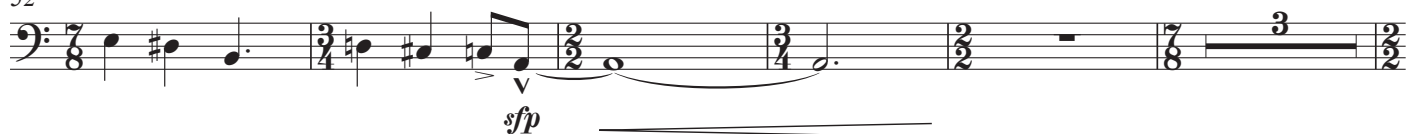


47



52

4



60



66



71



76



Tuba in E $\flat$  (B. C.)

80 5

*mp*

100 6

*cresc.* *mf*

121 7 8

*f*

142

*f*

153

*f*

157 9 old  $\text{♩}$  = new  $\text{♩}$  (♩=123)

*ff*

169 10

*mf*

189 11

*cresc.* *f*

202 12

*f*

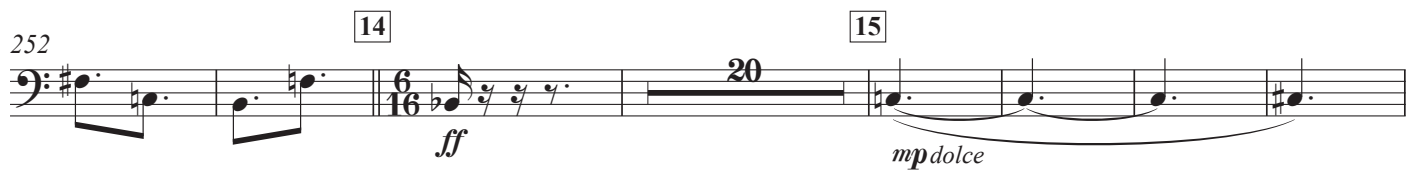
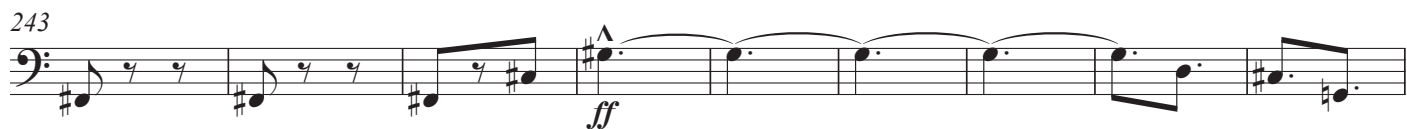
218

*f*

223

*f*

Tuba in E $\flat$  (B. C.)



Tuba in E $\flat$  (B. C.)

341 17 old  $\text{♩} = \text{new } \text{♩} (\text{♩} = 164)$

*ff*

351

*f*

363

372

381 18 old  $\text{♩} = \text{new } \text{♩} (\text{♩} = 82)$

*fff* *dim.* *f*

388 *rit.* 19 **Lento** ( $\text{♩} = 46$ ) **Grave** ( $\text{♩} = 32$ )

*mf* *dim.*

399 *poco a poco accel.*

*pp* *cresc.* *mf*

402

*f*

20  $\text{♩} = 184$

405 *ff*

409 *sffz*

413 *fff* *sfz* *sfz* *sffz* *fffz*