

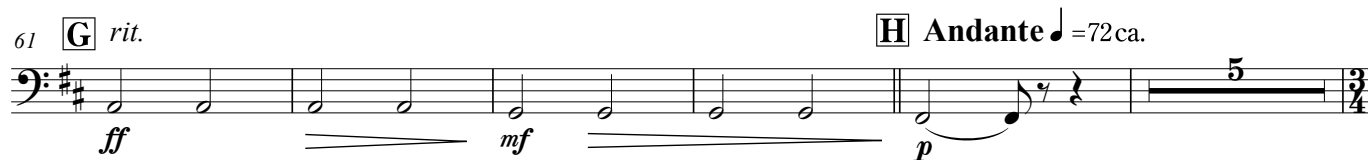
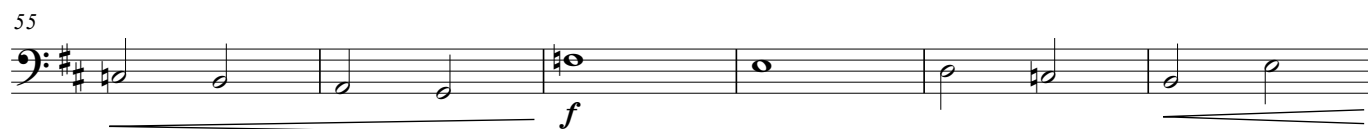
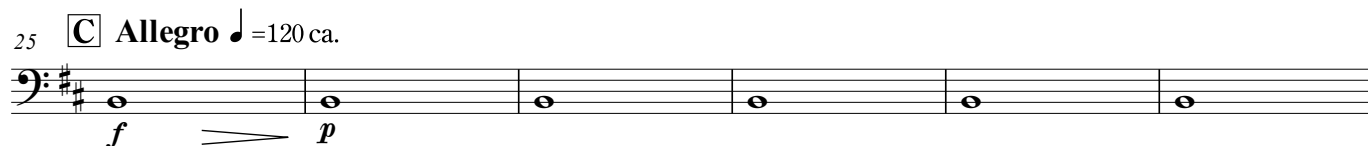
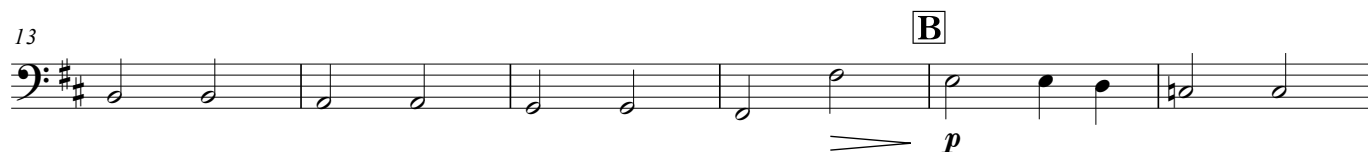
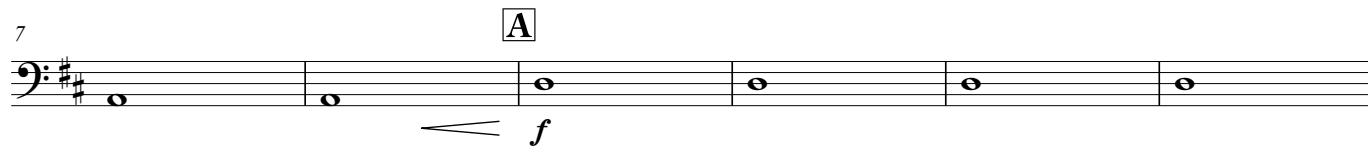
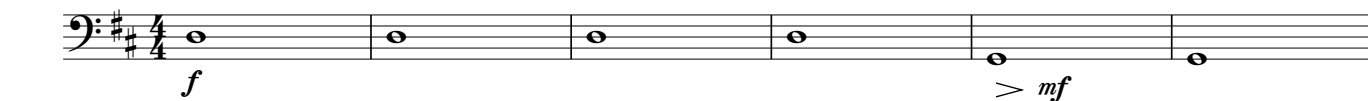
Tuba in E^b
(B. C.)

Hollyhock for Wind Ensemble

ホリーホック 復興の花

福島弘和 作曲
Hirokazu Fukushima (2024)

Brillante ♩ = 80 ca.

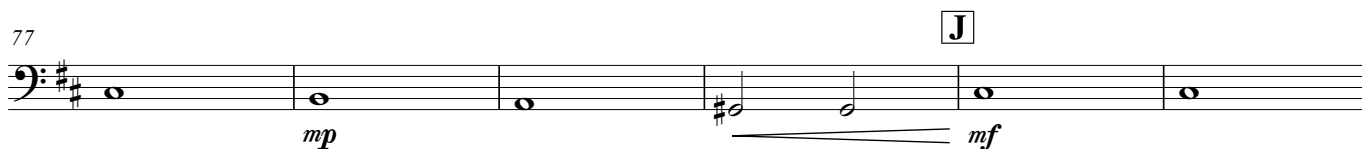


Tuba in E \flat (B. C.)

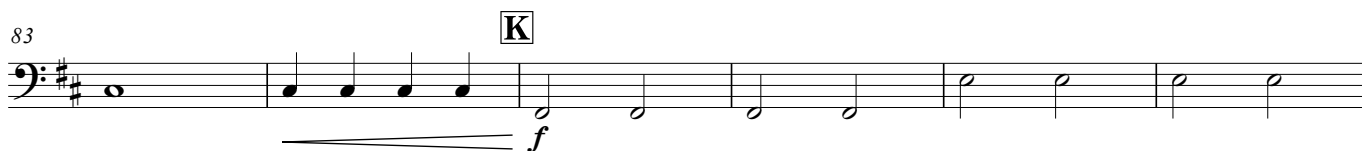
71 *rit.* **I** **Amoroso** $\text{♩} = 66 \text{ ca.}$




77 **J**



83 **K**



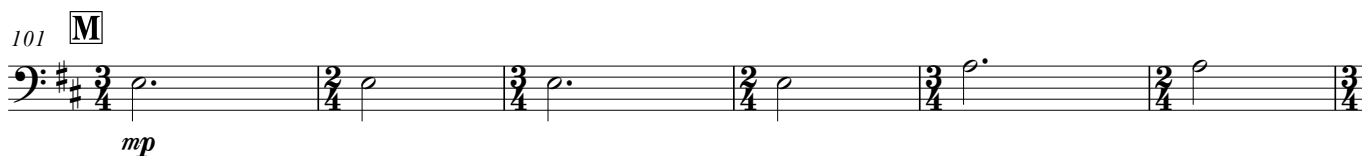
89 *rit.* **L** **Vivo** $\text{♩} = 160 \text{ ca.}$



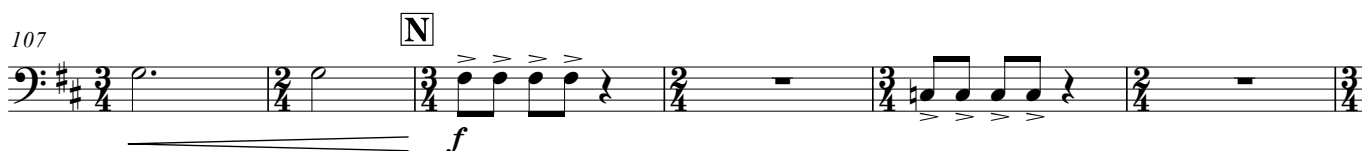
95



101 **M**



107 **N**



113 **O**



119

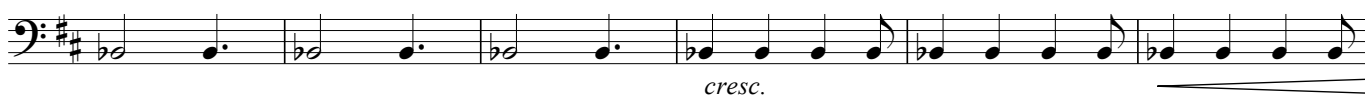


125 **P** **Q**



Tuba in E \flat (B. C.)

132



138

R



143

S



149

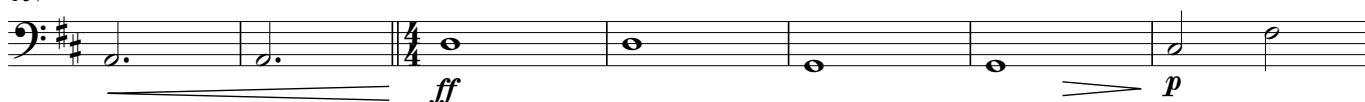
T

rit.



157

U **Maestoso** $\text{♩} = 72 \text{ ca.}$



164

rit.

V **Vivo** $\text{♩} = 160 \text{ ca.}$



172

W

sub. p



177



182

X

ff



187

