

1st & 2nd Tubas in B \flat
(B. C.)

2017年大津シンフォニックバンド委嘱作品

黎明のエスキース

Esquisse l'aurore - Sketch of Dawn

阿部勇一 作曲
Yuichi Abe (2017)

$\text{♩} = 180 \text{ ca.}$ **Appassionato** $\text{♩} = 150 \text{ ca.}$

6 **Appassionato** $\text{♩} = 150 \text{ ca.}$

17 **A**

23

28 **B**

34

39 **Con anima** $\text{♩} = 150 \text{ ca.}$

46

52

1st & 2nd Tubas in B^b (B. C.)

59

66

The musical score for the bass line of 'The Rose Tree' is written on a single staff in bass clef. The key signature has two sharps (F# and C#), and the time signature is 2/4. The piece begins with a forte (f) dynamic. The first measure contains a quarter rest followed by a quarter note G2 with a fermata. The second measure contains a quarter note F#2, a quarter note E2, and a quarter note D2 with a fermata. The third measure contains a quarter note C#2, a quarter note B1, and a quarter note A1 with a fermata. The fourth measure is a whole rest. The fifth measure contains a half note G2 with a fermata. The sixth measure contains a quarter note F#2, a quarter note E2, and a quarter note D2 with a fermata. The seventh measure contains a quarter note C#2, a quarter note B1, and a quarter note A1 with a fermata. The eighth measure is a whole rest. The ninth measure contains a half note G2 with a fermata. The tenth measure contains a quarter note F#2, a quarter note E2, and a quarter note D2 with a fermata. The piece ends with a final whole note G2 with a fermata.

73

ff

f

80

ff

f

ff

87  **C** **Delizioso** ♩ = 68 ca. *a tempo*

105 **D** ♩ = 77 ca.

mp *mf*

118

mp *mf* all

126

The musical score for Example 126 is written on a single staff with a bass clef and a key signature of one flat (B-flat). The tempo is marked 'Allegretto'. The score consists of eight measures. The first measure contains a half note B-flat, followed by a quarter rest. The second measure contains a half note D, followed by a quarter rest. The third measure contains a half note F, followed by a quarter rest. The fourth measure contains a half note A, followed by a quarter rest. The fifth measure contains a half note C, followed by a quarter rest. The sixth measure contains a half note E, followed by a quarter rest. The seventh measure contains a half note G, followed by a quarter rest. The eighth measure contains a half note B-flat, followed by a quarter rest. A box labeled 'E' is placed above the staff at the beginning of the sixth measure. Dynamic markings 'mf' and 'p' are placed below the staff at the beginning of the sixth and seventh measures, respectively. A crescendo hairpin is placed below the staff, starting at the beginning of the sixth measure and ending at the beginning of the seventh measure.

[illegible]

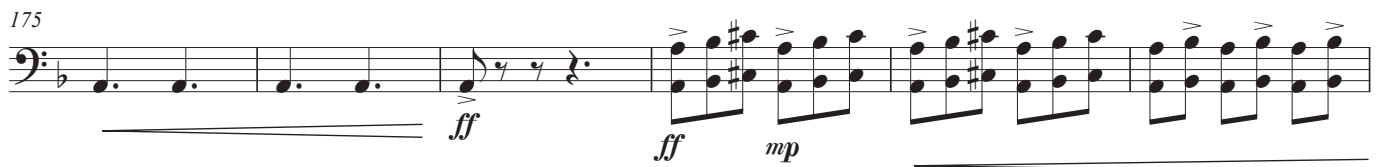
141 *poco rit.* $\text{♩} = 77 \text{ ca.}$ *rit.*

ff *p* *pp*

1st & 2nd Tubas in B \flat (B. C.)

Appassionato ♩. = 118 ca.

148 **Calmando**



1st & 2nd Tubas in B^b (B. C.)

227

f

237

mf *mp*

245

253

J Grandioso

ff

260

267

rit.

$\text{♩} = 118 \text{ ca.}$

ff

279

rit.

$\text{♩} = 80 \text{ ca.}$

ff *mp* *ff* *mp*

290

ff *sub. p* *fff*