

Tuba in E^b
(T. C.)

THE BALLAD OF THE GNOMIDES

Ottorino Respighi / Yoshihiro Kimura

Allegro vivace [1]

18

f *p* *fp*

div. 3 3 3 3 3 3 3 3 3 3

23

ff

8 4

[2]

unis.

ff

cresc. dim. *p*

46

[3]

3 14

p cresc.

66

[4]

ff

74

ff

83

[5] al

dim.

91

99

rall. e dim.

p

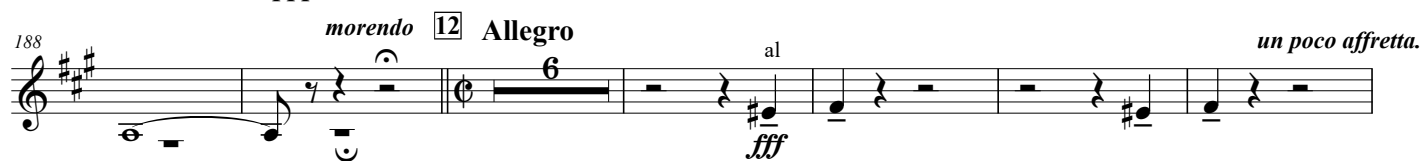
[6] **Meno mosso** (in 4 ♩ = ♩) [7] *a tempo* **Andante moderato**

10 5 10

[8] *a tempo* (♩ = ♩) *a tempo*

7 3 2

Allegretto mosso (scherzando)



ALLA MARCIA FUNEBRE



Moderato

257 *div. fff* *fff* *sf*

263 *dim.* *fff*

17 solo con sordina *p* *sf* *sf* *sf*

(senza sordina) a2 *f* *p* *f* *p* *f* *p*

280 a2 *ff*

286 18

293 19 *p* *all* *p* *ff* *p*

299 *ff* *p* *pp* *rall.* *2*

20 Allegro mosso *p* *cresc. poco a poco* *all* *poco a poco stringend*

318

323 21

Vivacissimo (in 2)

[illegible]

336

22 Cantando div. unis.

fff

341 *a tempo* **Cantando** *a tempo*

ff *< sf* *ff*

349 23 **Cantando** *a tempo*

The musical score for measures 349-353 is written on a single staff. Measure 349 is in 3/4 time, key of D major, and contains a whole rest. Measure 350 is in 3/4 time, key of D major, and contains a whole note D. Measure 351 is in 12/8 time, key of D major, and contains a quarter note D, followed by a quarter rest, an eighth note D, and a quarter rest. Measure 352 is in 3/4 time, key of D major, and contains a whole note D. Measure 353 is in 3/4 time, key of D major, and contains a quarter note D, followed by a quarter rest, an eighth note D, and a quarter rest. The tempo marking *a tempo* is placed above the final measure.

357 **Cantando** *a tempo* **24 Allegro mosso**
1.

ff *p*

362 *cresc. a poco a poco e stringend sempre* *all* *p* *div.*

370 25 unis.

ff

377 **Prestissimo (in 1)**

The musical score for the final section begins at measure 377. It is written in treble clef with a key signature of three sharps (F#, C#, G#). The tempo is marked 'Prestissimo (in 1)'. The notation includes a series of eighth and sixteenth notes, a double bar line, and a final measure with a fermata and a forte (ff) dynamic marking.

388

26

3

^

[illegible]