

1st & 2nd Trombones in B^b
(T. C.)

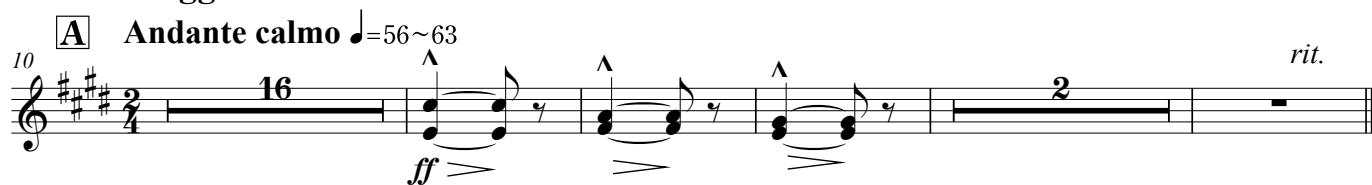
Manon Lescaut

A Selection from the Opera

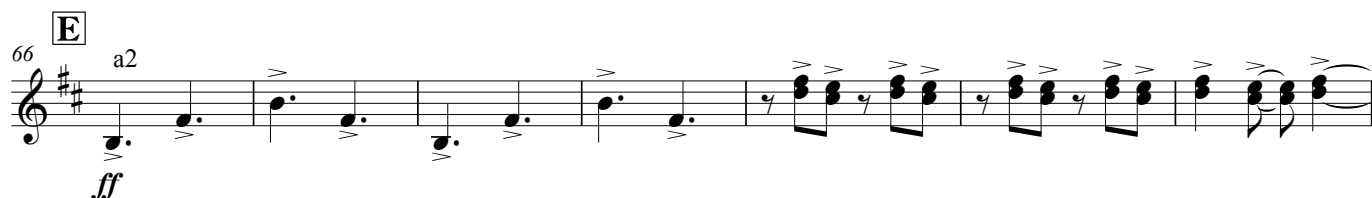
Giacomo Puccini
arr. by Koh Shishikura (2010)



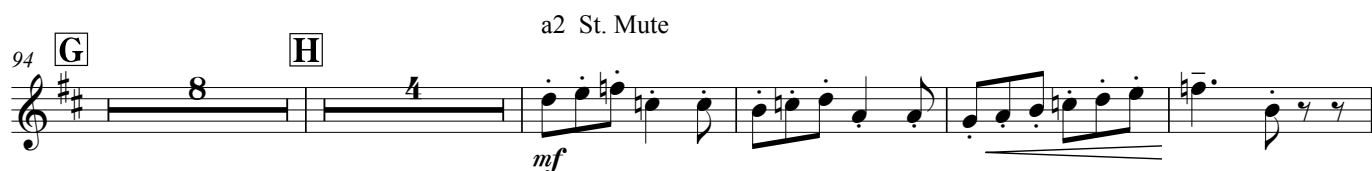
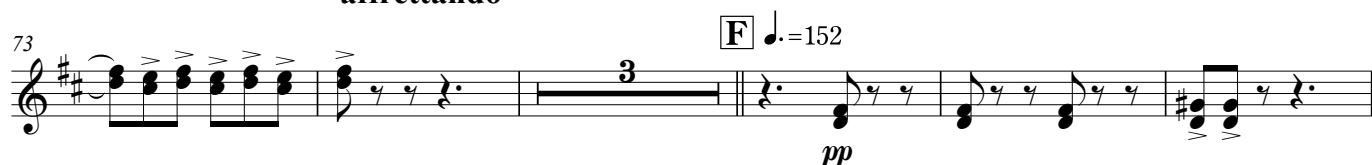
" Il viaggio all'Havre "



" Lescaut! ...Tu qui ? "



affrettando



1st & 2nd Trombones in B^b (T. C.)

I open *rall.* **J** **Molto sostenuto**

110 *mp* *ff*

a tempo *rall.* **K** ♩ = 160 *ff* 2

128 a2 *mf marcato* *ff*

134 a2 *mf marcato*

140 a2 *ff* 4 4 *ff* **L** a2

148 *mf* *ff*

155 a2 *p* *ff* a2

161 *stringendo* *a tempo* a2 *ff* *stringendo*

M **Vivacissimo** ♩ = 176

168 *ff*

1st & 2nd Trombones in B^b (T. C.)

stringendo

175

The musical score for Example 175 is written on a single staff with a treble clef and a key signature of two sharps (F# and C#). The piece begins with a series of four chords, each marked with an accent (>). These chords are: a D major triad (D4, F#4, A4), an E major triad (E4, G#4, B4), an F# major triad (F#4, A4, C#5), and a G major triad (G4, B4, D5). These four chords are beamed together. This is followed by a measure containing a D major triad (D4, F#4, A4) with a breath mark (^) above it, which is then tied to the next measure. The next measure contains an E major triad (E4, G#4, B4) with a breath mark (^) above it. This is followed by a measure with a D major triad (D4, F#4, A4) and a breath mark (^) above it. The final measure of the example contains a G major triad (G4, B4, D5) with a breath mark (^) above it, followed by a quarter rest. The piece concludes with a final G major triad (G4, B4, D5) with a breath mark (^) above it, followed by a quarter rest.

182

Example 182

" Donna non vidi mai " -Duetto- Manon e Des Grieux

Andante

189 $\text{♩} = 56$ *rall.* **N** *Andante* *lento* $\text{♩} = 63$ **O** *mp*

210 2nd

incalzando

217 **Sostenendo** *rit.* **Meno mosso** *rit.*

ff

[illegible]

233

Q ♩ = 80

a2

f *ff*

3 3 3

2/4

molto allarg.

238

$\text{♩} = 72$

a2

ff

244 *rit.*